



# GENERIC ADVENTURE SITE GUIDE (GASG)

## TRAINING & ASSESSMENT FOR PROFESSIONALS

### A Skills program for the **Professional Adventure Guide**

This CATHSSETA accredited program can be used for all adventure based activities, Bungee Jumping, Kite Boarding, Surfing, 4x4 Trails, Canopy Trails, Mountain Biking, etc. including Paddling and Mountaineering according to the rules of combination to allow a professional guide to register with the National Department of Tourism (NDT) to **become legal**.

Nationally  
Recognised

Multiple Avenues to  
Qualify

Improve your  
Employability

Be a Professional

Create a Career



Myganex PTY Ltd Trading as

Adventure  
Qualifications  
Network

[www.adventure-qualifications.com](http://www.adventure-qualifications.com)

**IF YOU ARE A WORKING GUIDE BUT ARE NOT YET QUALIFIED UNDER THE NATIONAL QUALIFICATIONS FRAMEWORK (NQF), AND REGISTERED WITH THE NATIONAL DEPARTMENT OF TOURISM (NDT) YOU ARE ILLEGAL AND CAN BE FINED. THE OPERATOR WHO EMPLOYS YOU CAN ALSO FACE HEAVY PENALTIES.**

***Get legal now! Don't take any risks with your career.***



**Adventure Guiding** is the third sector of the three main guiding disciplines in South Africa. They are Culture, Nature and Adventure.

Adventure guides are any persons who provide adventure based experiences for paying clients. The basic requirement to be a legal guide is you must hold a SAQA registered National Qualification as stipulated by the National Department of Tourism, ([NDT](#)) which is managed and certified by the Tourism sector education training authority ([CATHSSETA](#)).

**Once you hold the appropriate qualification, you can then register as a legal guide with the NDT.**

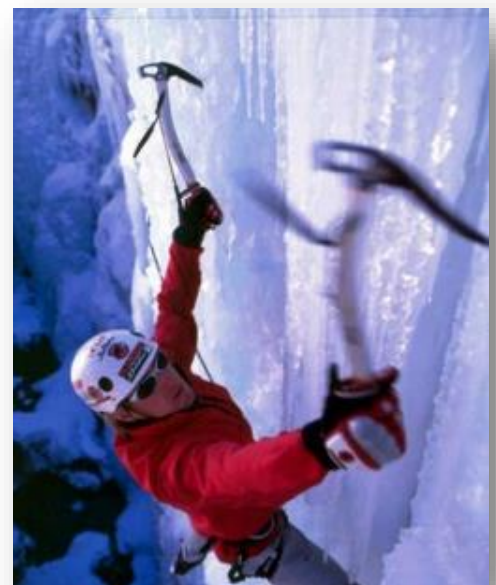
## What Are The 'Stipulated Qualifications'?

Although there are various levels and types of qualifications, there is only one program that is 'generic' for adventure guides and allows a multiple of activity disciplines to be guided. This is the Generic Adventure Site Guide (GASG).

Although termed a "site" guide, the guide is not restricted to a geographical site as the word 'site' applies to his or her adventure specialty that can be practiced in any place in the Republic. The word "generic" applies to the set of adventure tourism skills, knowledge and abilities that apply in all adventure guiding and does not restrict it to one activity. However, the guide is assessed 'in context' of the activity they wish to offer.

The guide must be assessed by an accredited assessment provider under the specific adventure skills program (TG/ADVSITEGD/4/0080) registered with the South African Qualifications Authority (SAQA) by CATHSSETA which encompasses a range of adventure unit standards to be rated an adventure tourist guide. While this may sound complicated it is the best way to professionalise the guide with the skills, knowledge and abilities that guides do need. This skills programme covers:

- [335803](#) – Research and design a guided experience at a prominent tourism site
- [335801](#) – Conduct a tourist guiding activity
- [262320](#) – Manage and organise groups
- [262317](#) – Lead participants through an outdoor recreation and adventure activity
- [262305](#) – Plan and implement minimum environmental impact practices
- [262246](#) – Set up and operate a camping site
- [255914](#) – Minimise and manage safety and emergency incidents
- [246740](#) – Care for customers
- [335816](#) – Conduct a guided adventure experience



# How Do I Get Qualified?

There are several ways guides can qualify.

**Attend a training course with an accredited training provider, and then get assessed.**

This is suitable for potential guides who have no or little experience and who are coming into the industry for the first time.

Courses usually last 5 days, and then after a consolidation period where you gain experience, you will be assessed. Usually one day, but could be two if you choose to do the overnight camping optional add on.



**Complete an online training course, and then attend a one-day coaching course then get assessed.**

This is suitable for potential guides who have some experience and who are coming into the industry with some knowledge of the industry. Obviously, computer literacy and access to a PC with internet broadband is essential.

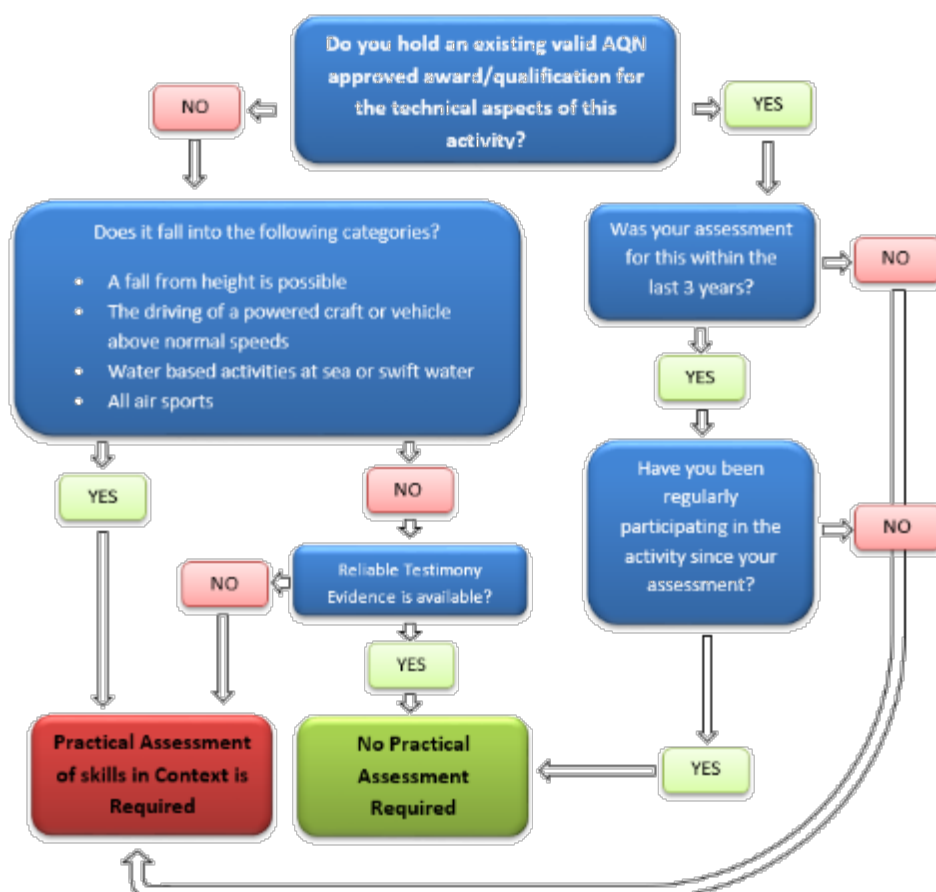
Courses are run at your own pace and time, and you have 120 days to complete the online learning section, at the same time you gain experience and then attend a one-day coaching session, you will then be assessed. Usually one day, but could be two if you choose to do the overnight camping optional add on.

## Complete a Recognition of Prior Learning Assessment

RPL suitable for guides who have a lot of experience and who have been working in the industry for some time in all aspects of the activity. (Admin, Planning, Guiding etc.).

RPL assessments can be done Online or Facilitator led.

Depending on the outcomes of this process, you may have to undergo a practical assessment, but this is not always the case. It depends on how well you can prove your technical competence in terms of this flowchart.





# What Will I be Able to Guide when I Qualify?



**This is up to you...** Most people coming into the Adventure Guiding industry will already have a passion for a specific activity or activities. It is very unusual for someone who is not already taking part in adventure activities to want to become a guide. **Adventure activities by definition, require technical skill, dedication and a lot of experience to do so safely.**

So, you probably already know what activity you want to guide. It's probably something you do as a hobby already. **Mountain Biking, Rock Climbing, Paddling, Kayaking, Surfing, Abseiling** etc. And now you feel you can make a business of doing this for paying clients.

There is no limit to the specialisations of this course however the course must be run "IN CONTEXT" to the specialisation or activity being undertaken.

In other words, if you wish to be assessed as a "Tree Top Canopy Guide" and as a "Surfing" Guide, you will need to do two assessments. Each assessment only lasts as long as a normal activity session would last. However, depending on the specialisations you want, it may be possible to do only one training course. Speak to your trainer about this.

**This is not a technical skills training program.** We are not teaching you the **technical skills of the activity**. We recommend you attend specialist courses for this such as doing a course through recognised industry associations. However, our trainers and assessors are all very highly experience and qualified in several varied activities, so depending on what activity you want to guide, your trainer may be able to add this to the program as necessary. **The cost of technical training is in addition to the cost of the GASG.** Think of the GASG as the folder of skills which formalises and brings all the skills you need to be a guide together in one qualification.

## What Does It Cost?

This depends on what route you take to get qualified.

A **fully facilitated training** course will cost in the region of R5-6000 depending on the numbers of people on the course. An assessment would normally be under R2000.00. But these are guide prices only. You must discuss your own unique situation with your trainer.

An **Online training course** will cost about **R3965.00**. Plus, the cost of the coaching day, your technical skills training unless you are already competent, and Assessment costs. The assessment will normally be under R2000. All together budget on about R10 000 but it could be much less.

Assessors normal fee is around the R2000 per day. In other sectors, it ranges from R3-5000 per day. Normally the fee is divided between the numbers of learners being assessed on any one day. Depending on the discipline, this averages from 4 to 6 learners. In addition, most learners are not including overnight camping so their assessments often last around 3 hours, again reducing the cost pro rata. If you are doing the overnight camping, it mandates an overnight (2 day) assessment.

### Online Courses charged in SA Rand via bank card?

The online courses can be paid for via Debit or Credit card online in a fully automated process through secure online servers.

Simply go to [THIS LINK](#) and select the course you wish to do.

You can also use this link to re-register if you have not managed to complete the online course in the allowed 120 days and you wish to purchase an extension.

# What Happens During Assessment?



**Assessments are great fun and you will learn a lot on the day as well as being assessed.**

You should have a meeting with your assessor prior to the assessment day. This may due to circumstances be a telephone call or a series of emails. This is to plan the day and make sure you are ready for assessment and know exactly what will happen. It is our intention to get you through first time if possible, so we do not want to go into assessment if you are not properly prepared. Once the assessment day has been planned and agreed to...

- You will be provided with a copy of the assessor's checklist prior to the assessment. This allows you to see exactly what you need to do on the day.
- If you have been doing a Facilitated program (i.e. Not online), you will write a written knowledge assessment which takes 3 hours at the most. Your assessor may be able to let you write this online if IT facilities are available.
- You will then run a guided activity session of the activity you want to be signed off for. Climbing, Paddling, Bungee jumping etc. You must have a group of at least 4 simulated clients for this. You must arrange these. In some circumstances, other learner guides could act as these clients. Talk to your assessor about this.
- During your assessment, the assessor may ask questions to clarify why you are doing certain things, and may even provide some coaching to improve your technique. Coaching will only occur after you have already demonstrated a skill satisfactorily, and the coaching is just to improve your techniques to best practice standard if appropriate.
- At the end of the activity session, your assessor will provide feedback to you on your performance and give you the opportunity to provide your own feedback on the process and assessors performance.
- The assessor will provide a result immediately, but this result is subject to the moderation process, and may be changed. You will be kept fully informed of this process.
- If there is anything you are not happy about during the assessment, you may appeal in writing, and your case will be heard by an appeals panel. This is very unusual though.
- After moderation, a temporary certificate will be issued, and a few months later an official CATHSSETA qualification certificate will be issued. You can use your temporary certificate to register with the DNT as a guide in the meantime.



# Recognition of Prior Learning or the Full Course.

## Which is better for me?

This depends a lot of how much experience you already have and how much you can prove from your experience. What is vital to understand is that **Recognition of Prior Learning (RPL) is not a short cut to save you doing the work.** It's not the easy way out. In fact, in many cases, proving competence by RPL is more difficult than just doing the course.

The reason is simple to understand. In RPL, you will be asked to provide evidence of your skills and knowledge for a variety of outcomes. You then must find and supply this evidence to an assessor. You may know for certain you can meet the outcome, but how do you prove it. RPL also does not automatically exempt you from a practical assessment. In most cases, there are gaps in a person's knowledge or skills which can only be filled by practical intervention.

On the other hand, by doing the full course, the training materials you receive will guide you through a series of tasks which in themselves will not only teach you the skills, but assess your competence at it.

Over the 17 years AQN has been providing National Qualifications to the Adventure Industry, it is our experience that **even highly experienced Guides, will have gaps and will learn valuable new skills** and knowledge by working through the process systematically. No one knows it all no matter how long you have been in the industry.

So...

### RPL will suit you if:

- You have substantial experience in this activity in a professional guiding role.
- You have been meticulous in collecting and storing information which proves your experience and skills.
- You are willing to work on your own from guidelines to gather and present evidence of your knowledge and skills.
- You are willing to learn and are self-motivated.

### The Full Course will suit you if...

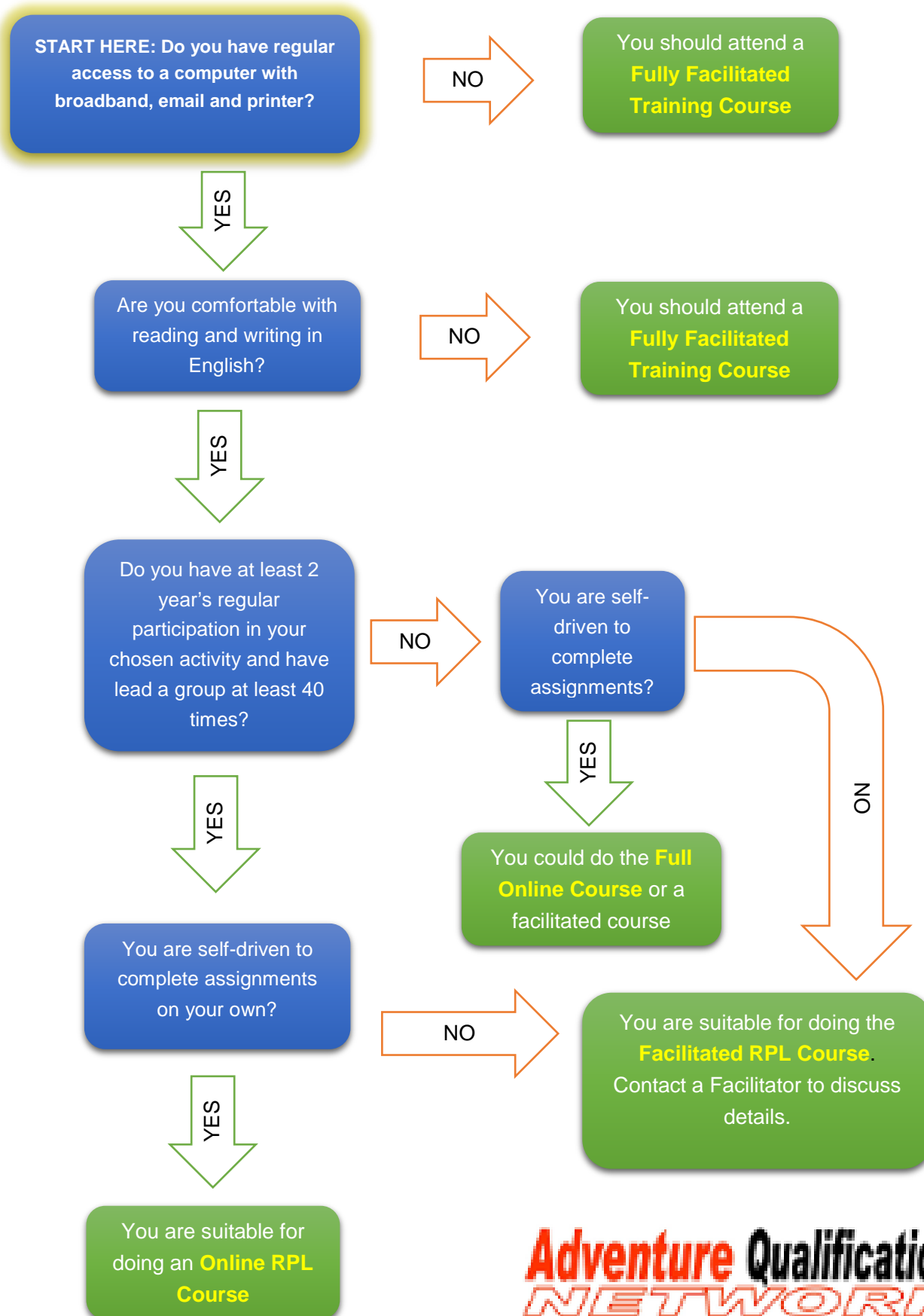
- You are new to the guiding sector (Less than a year full time)
- You need continuous guidance whilst learning and proving your competence.
- You prefer to be able to see examples of the type of work you are expected to produce.
- You will find it easier if someone is leading you through the process.

Both options are available in either a Facilitated or Non-Facilitated (Online) option. For very new people in the industry, or anyone without a lot of self-drive and access to resources, it is recommended that you do a facilitated process, so you will have someone physically there and available to assist you.



# Which process should I choose to do?

This is just for the generic theory section of the Generic Adventure Site Guide Program.



**Adventure Qualifications**  
**NETWORK**



## To Summarise:

At the end of the course, you will be able to:

- Care for customers
- Minimise and manage safety and emergency incidents
- Lead participants through an outdoor recreation and adventure activity
- Manage and organise groups
- Conduct a tourist guiding activity
- Conduct a guided adventure experience
- Set up and operate a camping site (Optional)
- Plan and implement minimum environmental impact practices (Optional)
- Research and design a guided experience at a prominent tourism site (Optional)



**Duration:** **Facilitated Training** - 5 days

**Self-Directed E-Learning** – In your own time (max 120 days)

**Assessment** - 1 day (2 days for camping activities) done after a consolidation period.

**Recognition of Prior Learning Online Assessment** - In your own time (max 120 days)

**Costs:** Between R6000 and R10 000 depending on variables. Please request this from your Trainer for up to date information.

**Enrolment:**

- Must be at least 17 years of age (18 for assessment)
- Speak and understand the English language at NQF level 3 (unless accompanied by a skilled translator, or as accepted by your Trainer)
- Fit and healthy for adventure based activities
- Already competent at the technical aspects of your activity.
  - We will use any approved “Industry Body” assessment, or
  - We assess you in “Context” of the activity being offered under supervision of a subject matter expert.

**Exclusions:** No one with any impairment that would be dangerous in the applicable activity context may undertake this training. E.g. Vertigo, Uncontrolled epilepsy, Drug or alcohol dependence etc.

**Location:** May be run at any suitable venue or online. Please discuss this with your Trainer

**Equipment:** We recommend that you supply all your own activity equipment to increase your confidence with it. However, Trainers can supply all relevant equipment as needed. Many South African adventure sites are in remote areas with no facilities so learners should come fully prepared for the outdoors.

**Qualification:** After Successful Assessment: Nationally Recognised Statement of Attainment titled...

TG/ADVSITEGD/4/0080 - Adventure Site Guide – “Your Context”

**Adventure Qualifications**  
**NETWORK**

### How do I Enrol?

**You can enrol online at the AQN [website](#) for online courses or you can enrol with any of the [AQN registered Facilitators](#) which are listed on the website.**

**[www.adventure-qualifications.com](http://www.adventure-qualifications.com)**



## Some feedback from past Learners on the GASG:



"I found the process, once the assessors were able to come out and assess us to be informative, and useful and relatively easy to follow. It was nice to have an alternative perspective on our trip that we offer and to have a few safety protocols etc emphasised. All in all, i am glad to have been part of the process and the facilitators did well." - **Matthew**

"The training and assessment was very useful to me. It broadened not only my approach in knowledge and learning, but it had also broadened my knowledge logistic wise. The process sometimes interrupted my work life but somehow it had linked and a sense of balance within the process and my workspace increased which allowed me to find liberty of knowledge and structure in terms of what I was doing and how I was doing it as well as making positive changes to suit what was coming out of the process for me as an individual.

The suitability of the course was very frustrating at the beginning but as time and 2 days went by, I started to become more pruned to knowing what is expected of the process.

The system of AQN is very different but what has been encouraging for me is the fact that it is very versatile and eye catching and it has a way of drawing you closer to a particular thing that would sometimes frustrate me the most. Ironically it always enhances within you a different way of thinking, even when least expected." - **Megs**

"Wasn't easy but I did it" - **Graeme**

"I found the online process relatively easy and convenient being able to it in my own time. Any login or technical issues were address in good time by Andrew. The course content was relevant and it will improve the experience that I will be giving to my clients as a mountain guide." - **Clinton**

"The course was good and enjoyable. I learnt a lot and Graeme was very helpful." - **Mkhize**

"The process was well explained and easy enough to follow. Graeme was very helpful in explaining how the online platform works and in pointing me in the right direction. I look forward to adding further qualifications to my profile." - **Peter**

"I found it to be easy as I was already a guide a lot of what was taught I already knew. The assessor was very helpful and knowledgeable." - **Victor**

"I found the process very intricate but well detailed. It assisted me in a knowledgeable manner as to the way things work. I thoroughly enjoyed the assessment due to my experience and knowledge in the field, and do feel that it Contributed to my day to day practices. This has certainly opened my eyes and made me more aware of how things work properly." - **Damian**

"Very interesting and help full. Makes you think outside of the box." - **Waldo**

"Good, quick and easy no hassle" - **Carel**

"Really enjoyed working through the material. Learnt a lot. Will definitely help activity- and camp operations that I am involved with on regular basis. This is a great course. Looking forward to adding some more skills onto this now. Process regarding the assignment submissions and the assessments ran smoothly. No issues." - **Willem**

"What a professional experience, enjoyed the hiking course- although helped by a rad crew." - **Warren**



"Process was fine and makes sense to me. Suitability of the course is relevant and while a lot of it was common sense to me it helped put it all into perspective and reminded me of how it all fitted together and the importance of many aspects of the contents. It was a good learning experience with a lot of interesting ideas and thoughts. There were also aspects that were new so overall a worthwhile course to complete. The course certainly helps to put everything into an organised structure making the future a far better structured process as well as highlighting what is needed to ensure a very good experience for guest on future adventure excursions." - **Jeffery**

"I thoroughly enjoyed the experience of working through Adventure Qualification Network and in particular Andrew Friedemann. AQN and Andrew's professionalism as well as service is of the highest quality. Both in my opinion are a credit and asset to the industry." - **Campbell**

"I found the course comprehensive as a "generic" syllabus. Having templates was useful in terms of setting up customized ATP's, SOP's and briefings. The legal aspects covered were of great importance and liability issues can never be underplayed. Feedback was always prompt and advice useful and pertinent. I certainly gained insight into certain aspects of outdoor life that has changed my outlook remarkably." - **Paul**

"Andries provided calm and thorough instruction with a good nature and sense of humour. I felt comfortable asking him questions and he always took time to explain in detail. Being able to practice these skills under competent supervision makes this process shorter and easier than it may otherwise have been." - **Chanel**

"The process was thorough and well organized" - **Ruth**

"Course was very Informative and physically engaging. Rob is a great Assessor and I learnt a huge amount from him." - **Rogan**

"I found the process to be timely, cost effective and efficient. I learned alot that can be applied for real world situations." - **Ryan**

"I have learned so much about the finer detail of being a guide. Andries is an amazing, most inspiring and extremely knowledgeable teacher. The course has placed me on another level where by I can handle, offer and experience guiding on a more professional and efficient manner. I would definitely recommend this course to others who express an interest in being a guide. I do look forward to further studies in the area of adventure guiding." - **Merlin**

"Andries Steyn is a knowledgeable, competent trainer. His transferal of knowledge is professionally executed yet one has the ability to have fun during the training sessions. I further found that he is an individual who allows others to express their experiences without interruptions from him. With regards to the course content, it is in depth and thorough yet easily absorbed. I recommend this course to all those who wish to attain a qualification in the guiding profession." - **Ian**

"The online component was a helpful way to do the training for me, in my own time. Good responses from the facilitator when required. Many good resources for guiding trips safely and improving the customer experience." - **Andrew**

"Andries was such a helpful and inspirational source of knowledge in this ever-growing industry. his skills and knowledge surpasses that of his needed field but always available to share and teach in his own way. I have become a better lead guide and person due to his lessons." - **Dylan**

"I found the process to be fairly straightforward and pragmatic. It was all geared to getting one to think a bit, become aware of this and that, which is great." - **Angela**

"Graeme was a very good lecturer. He had a lot of patience and assisted were possible and if I did not quite understand he would explain it again to me. You can see he has a lot of experience and learned so much over the years and he is willing to share that with you, well that is just an honour and privilege." - **Lazarus**

"With all my experience in the field this course still added much appreciated value. I have learnt about a broader scope of Mountain biking and its potential for safe sustainable tourism. This course enriched my knowledge. The course did not interrupt my work or life as it contributed systematically with bookings I was working on." - **Samantha**



Provider Name:  
Date:  
Provider Contact Person:  
E-mail Address:

Adventure Qualifications Network  
2013-07-19  
Mr Andrew Friedemann  
[Andrew@adventure-qualifications.com](mailto:Andrew@adventure-qualifications.com)



### Learning programme approval

Dear Mr Friedemann

With reference to the above, please be advised that the CATHSSETA Sector Education and Training Quality Assurance Body evaluated the submitted Skills Programme: **Adventure Site Guide, TG/ADVSITEGD/4/0080** and confirms that it addresses the requirements to award Full approval status with regards to the following unit standard:

TG/ADVSITEGD/4/0080		Adventure Site Guide L4		NQF Level	Credits
SAQA ID	Unit Standard name				
335818	Conduct a guided adventure experience	Comp	4	8	
248740	Care for customers	Comp	4	3	
335801	Conduct a tourist guiding activity	Comp	4	8	
255814	Minimise and manage safety and emergency incidents	Comp	4	6	
262317	Lead participants through an outdoor recreation and adventure activity	Comp	4	10	
	Electives: Select at least one of the following US: Minimum 5Cr	Elective	4	5	
262248	Set up and operate a camping site	Elective	4	5	
		Elective	4	10	
335803	Research and design a guided experience at a prominent tourism site	Elective	4	5	
262320	Manage and organise groups				
262305	Plan and implement minimum environmental impact practices				
Total Credit Value Minimum 40 Credits					

Approval status valid: From 17 July 2013 to the learner registration end date of the qualification.

The above unit standard will be added to your accreditation scope of training only for the period mentioned above.

The implementation of this programme will be verified at a visit when completed and non-compliance could result in the scope being revoked.

Should you require further assistance in this regard, kindly contact the CATHSSETA ETQA Programme Administrator.

Kind Regards

External Verifier  
Tel: 073 448 8687  
[Martha@polka.co.za](mailto:Martha@polka.co.za)

Call Centre : 0860-100-221  
Telephone : 011-217-0600  
Fax : 011-783-7745

Postal Address  
P.O. Box 1329  
Rivonia 2128  
South Africa

Street Address  
3rd Floor, Block E  
Sandhurst Office Park  
Cnr Rivonia Road & Katherine Street  
Sandton  
2146